

# Install Reference

## Versa-Pak V8

By PSI Waste Equipment Services, Inc.  
Versa-Pak V8 SUPPORT [www.versa-pak.net](http://www.versa-pak.net)  
Phone: 352-742-4774 | SMS Support and Parts: 352-309-1147  
E-mail: [support@versa-pak.net](mailto:support@versa-pak.net)

TEXT 352-309-1147 for the best support in the industry!

For support include any relevant pics of your install.

Please wire your Versa-Pak system according to the wiring diagram and please keep it neat. We can't support an install that is not wired to the diagram or is too sloppy to see how it is wired.

**For Auto Count Settings: Look on the back of this page!**

### Install

- Remove control system and terminal blocks. Leave only the transformer and starter.
- Remove all wires from contact blocks on the control buttons.
- START button and REVERSE button should have (1) N.O. contact block. E-STOP should have (1) N.C. contact block.

**NOTE: If you are not installing a REVERSE button, please see Start in Reverse section at the bottom of page 10 in Operation Manual to set the compactor to start in reverse.**

- Install control system and wire according to diagram included. Tip: Don't install options until you are up and running.
- Set PRESSURE SWITCH. We typically set the PRESSURE SWITCH 150-250psi below relief pressure.
- Set relief pressure. Most compactors are set at 1800psi or so for timer shifting units. But some are much lower and some higher. If your compactor was limit or pressure shifting the relief is set too high for a timer shifting unit. Turn the pressure down.
- Set [Forward Time], [Reverse Time], and [Multi Cycle].
- Now that the unit is running properly, add ONE option at a time. That way if the unit stops working, you'll know where you went wrong.
- If the unit is Auto Count, see page 2.

### Setting Parameters

To get to Parameters from the main screen

Press ▼ then ESC / Program / Set Parameter

NOTE: If you get stuck on the screen that says "ESC+C... 9/9" and then has 4 arrows on it, press ► to get back to date screen.

You can press ◀ or ▶ to scroll through screens but they are mostly useless.

Each parameter is named for easy identification.

Use OK to enter the parameter, to indicate you want to change that parameter, and to save the new value.

Use ESC to get out of the parameter or if you change your mind after changing value but before you save with OK.

On Timers, you only set the T. Pay attention to the h (hours), m (minutes), and s (seconds) at the end of the times.

On Counters you only set the ON =

On Weekly Timers you would typically only set "D1 = [Days of Week]", "ON1 = [24hr time]" and "OFF1 = [24hr time]"

When done with Parameters ESC back to date screen, then wait or press ▲ to get to Messages Screens

## Auto Operation Quick Start

\*\*\*Please read and understand the entire manual prior to your first install\*\*\*

It is assumed you are experienced in repairing trash compactors and have read and understood this manual and ANSI Z245.2.

### All Types of Automatic Operation

For the compactor to run automatically (Auto Door Count, Auto Photo Eye, or Auto Timer) you must first **set the [CLOCK] and [Auto Operate]**. For Auto Door Count you must set [Door Count]. For Auto Photo Eye, hook photo eye up to I6. Auto Timer see pg15.  
**Set Clock**

Clock must be set for Automatic Operation. From the main screen:

▼ | ESC | Setup | OK | Clock | OK | Set Clock | OK (if you don't see "Clock" in this screen go to next section)

Set time (24hr format so 1pm is 13:00) then press ► to scroll to date. YY-MM-DD. Day of week is corrected. OK

Set S/W time. If the location of the install follows Daylight Savings Time, set S/W Time for US2. Otherwise, don't set.

Press ESC once to Setup menu and go down to Switch to OP and click OK. This locks others out of the PLC and prevents deletion of the program. To get back in Password is LOGO. ESC back to date screen and program messages will appear in a few seconds.

Set Clock from Operate Mode (if you don't see "Clock" in Setup screen)

Switch to ADMIN | OK | LOGO (use ▲ and ► to enter password) | OK | Setup | OK | Clock | OK

Set time (24hr format so 1pm is 13:00) then press ► to scroll to date. YY-MM-DD. Day of week is corrected. OK

Set S/W time. If the location of the install follows Daylight Savings Time, set S/W Time for US2. Otherwise, don't set.

Press ESC once to Setup menu and go down to Switch to OP and click OK. This locks others out of the PLC and prevents deletion of the program. To get back in Password is LOGO. ESC back to date screen and program messages will appear in a few seconds.

To get to Parameters after setting clock go to Program | OK | Set Parameter | OK

To get to Parameters from main screen– press ▼ then ESC | Program | OK | Set Parameter | OK

### Set Auto Operate Parameter

Parameter Name	Parameter Default	Suggested setting to enable Auto Operation	Notes
Auto Operate	D1 = MTWTFSS ON1 =00:00 OFF1=00:00	Auto Operate 24/7 D1 = MTWTFSS <b>ON1 =00:01</b> OFF1=00:00  Operate 6am-10pm D1 = MTWTFSS ON1 =06:00 OFF1=22:00	Enables Auto Operate during certain times and days. The default time will not allow auto operation of any kind because the days of the week are disabled. The alternative example is 6:00am – 10:00pm (24hr clock), 7 days a week. Compactor will run in auto from 6am-10pm every day. Setting ON1=00:01 and OFF1 to 00:00 will allow auto operation any time of the day. Count will be reset and not allowed during off time. Once Auto Operate is again enabled, Door Count will again be functional. Manual START is always enabled.
ANSI 20 sec	20:00s	With Light/Buzzer 20:00s Without warning light 00.00s	This version of Versa-Pak only has 1 output for a light/ horn. So, to limit the time the horn is on you must either buy the light/horn from us or provide a separate timer to shut the horn off after 5 seconds. Disable if not using warning light/buzzer (00.00s)

### Auto Count- set Door Count parameter. See page 12 for more information on Auto Count

Parameter Name	Parameter Default	Suggested setting to enable Auto Operation	Notes
<b>Door Count</b>	<b>900003</b>	<b>3</b>	Sets number of door closes to initiate auto-count feature. This is reset when ram reverses. So if the door is opened during the first forward stroke it will start again on the next door close.

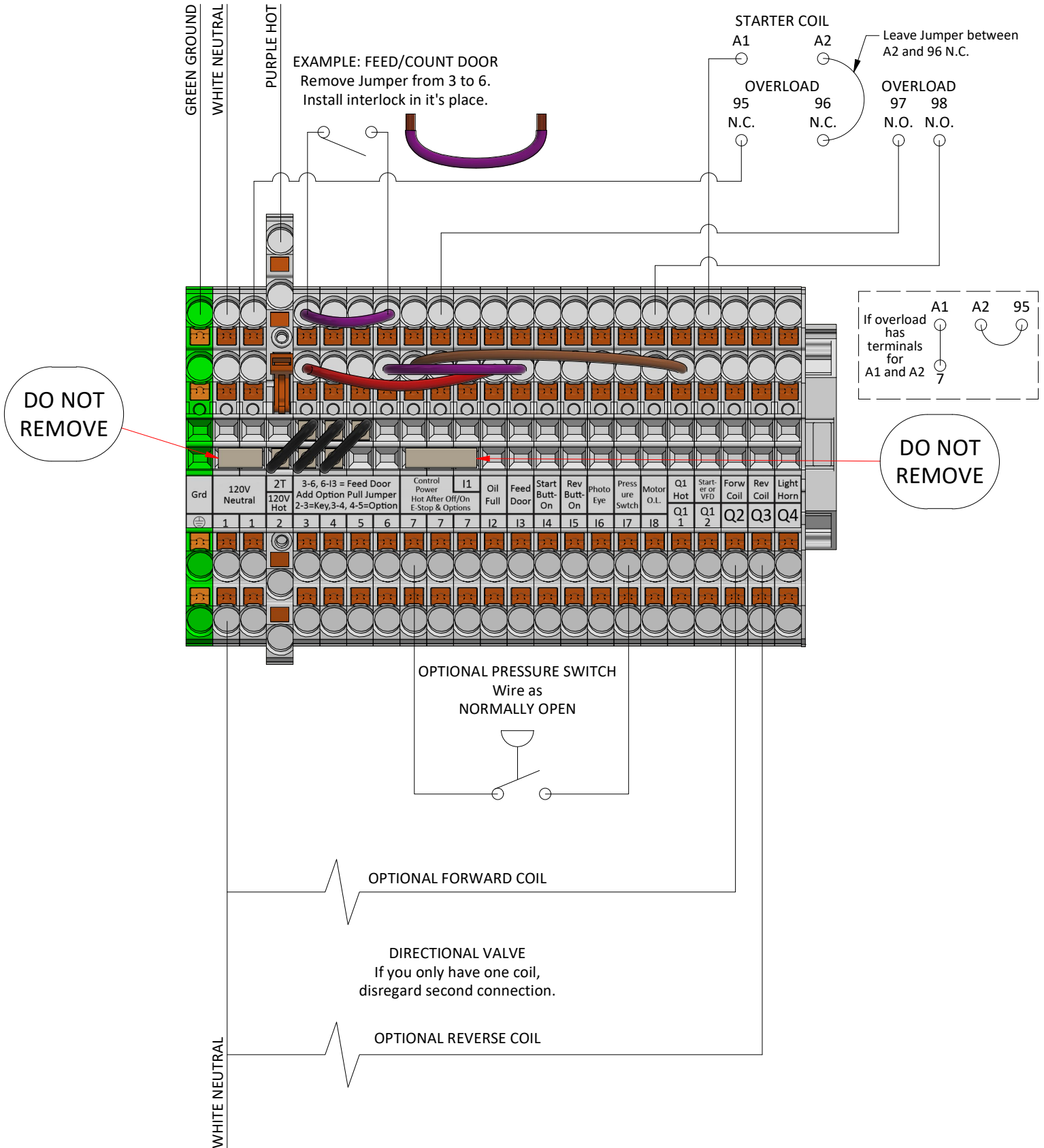
**After setting parameters you can ESC back to date screen and program messages will appear in a few seconds.**

Auto Eye - See page 13 for more information on Auto Eye

Auto Timer - See page 14 for more information on Auto Timer

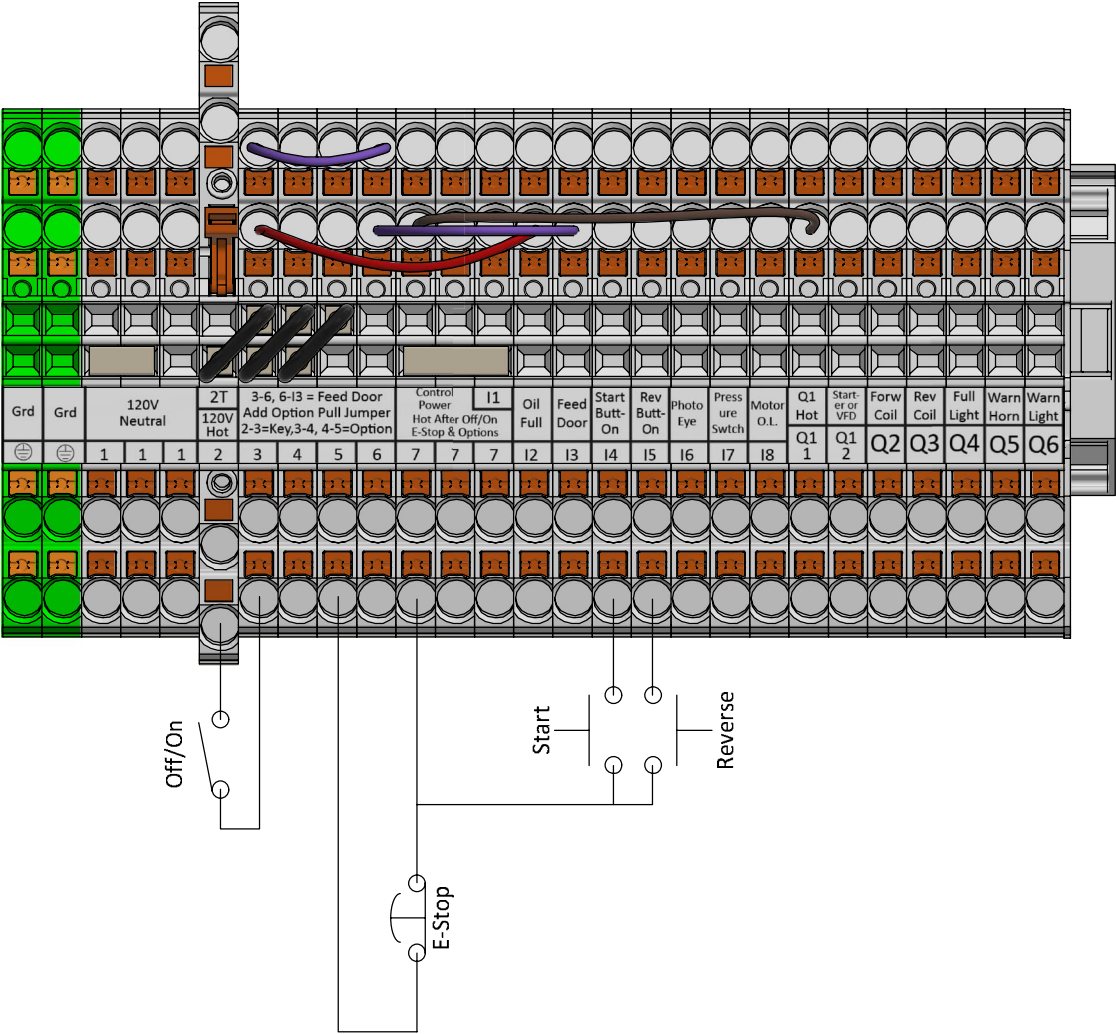
# INSTALL DIAGRAM

When removing the wires from the transformer and starter, cut the wires leaving them attached to the terminals. This will make it easy to identify where the new wires go during the install. Connect new wires from Versa-Pak to each component as previously connected. Versa-Pak does not use auxiliary contacts on the starter. These wires can be removed.



# CONTROLS DIAGRAM

Connect the control wires as shown below. Remove jumper between 2 and 3 if wiring the Off/On switch. See drawing for more detail.



# EXPLANATION OF JUMPERS

Jumpers are used to complete the control circuit when options are not needed. They can be removed only when replacing with the appropriate component.

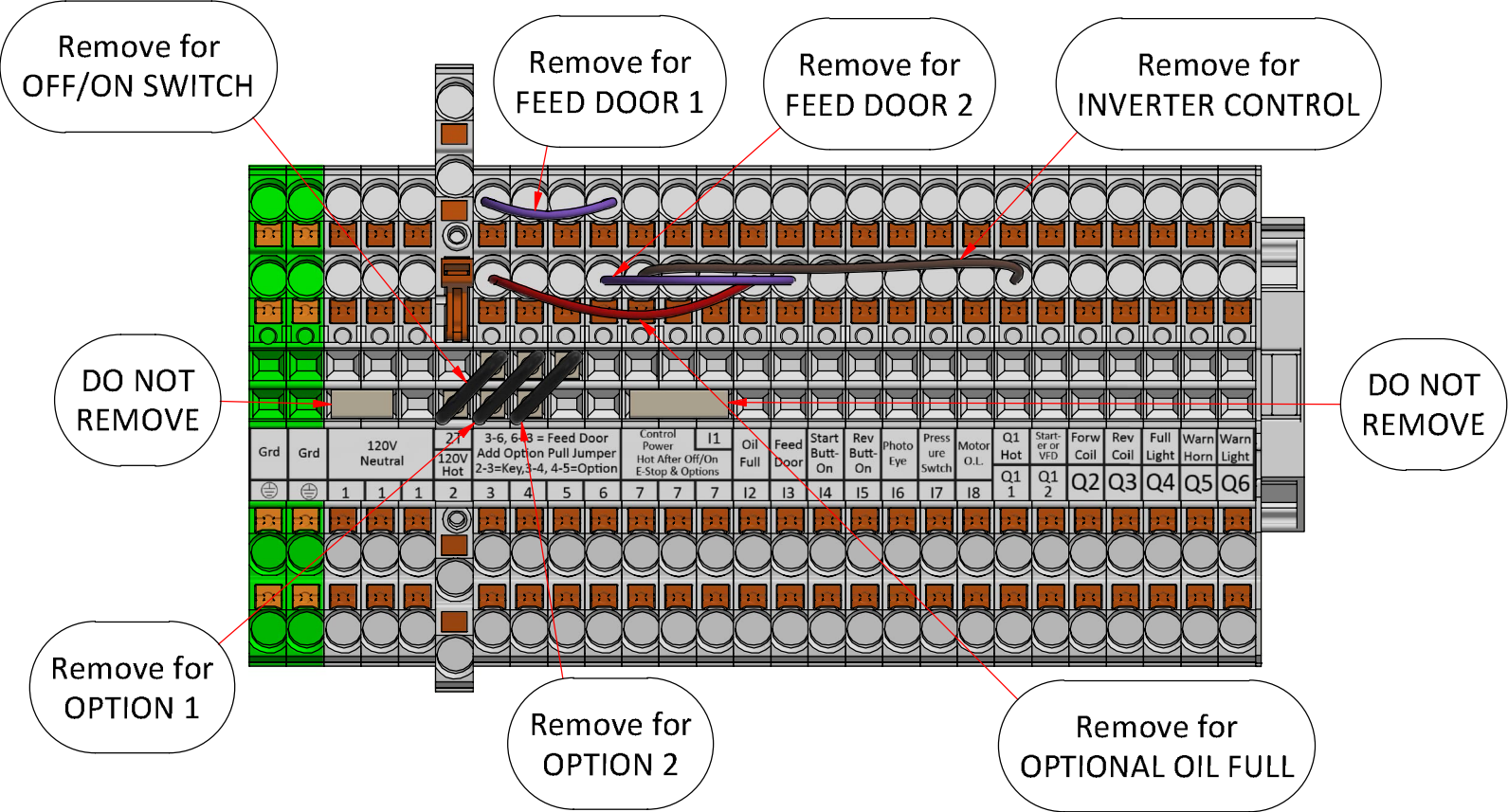
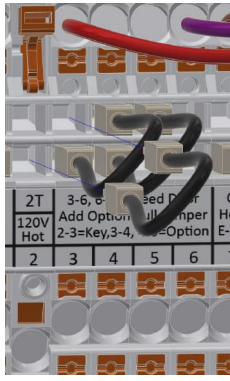


Fig. A



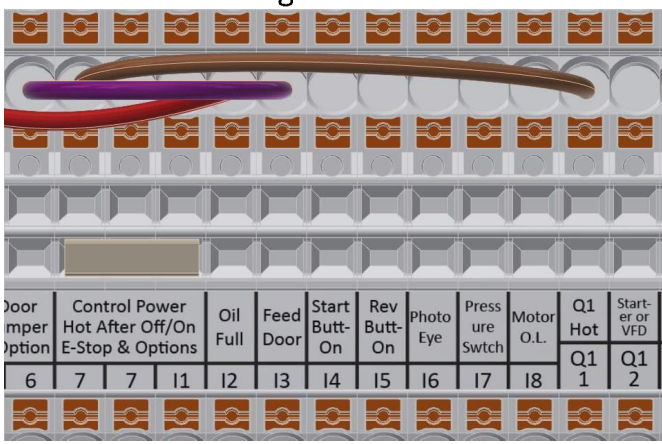
## EXAMPLE INSTALLING OFF/ ON SWITCH

For instance, if you were wiring in an Off/ On switch, you would remove the jumper from 2 and 3 and replace it with the wires coming from the normally opened contact of the switch. See Fig A. and Fig. B. Other jumpers work the same.

Fig. B



Fig. C

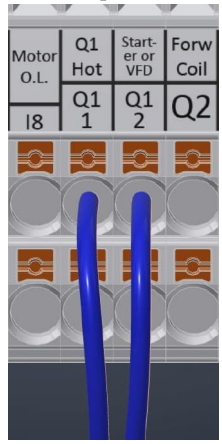


## EXAMPLE IF INSTALLING VERSA\_PAK WITH A MOTOR (VECTOR) DRIVE

Jumper 7 to Q1 1 (Fig. C). This jumper is removed ONLY when wiring in an inverter. In this instance, the jumper will be removed, BUT the inverter control wires will wire into Q1 1 and Q1 2 (Fig. D).

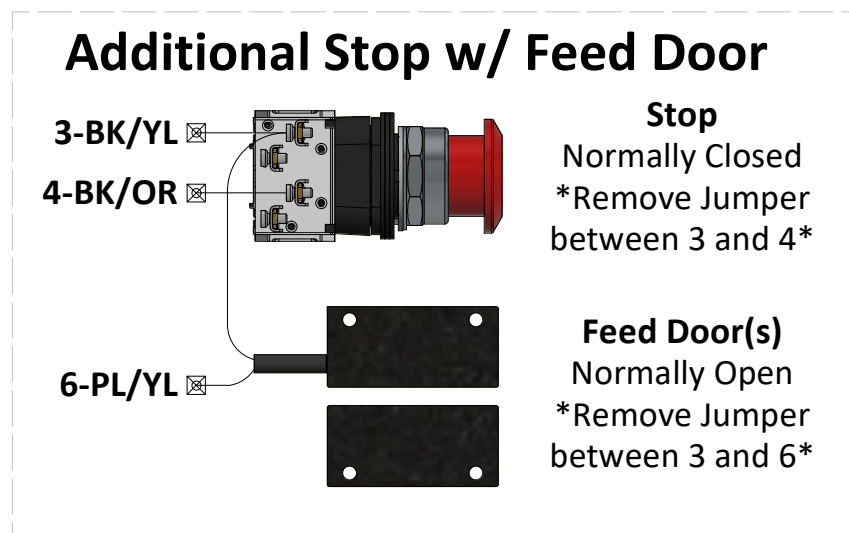
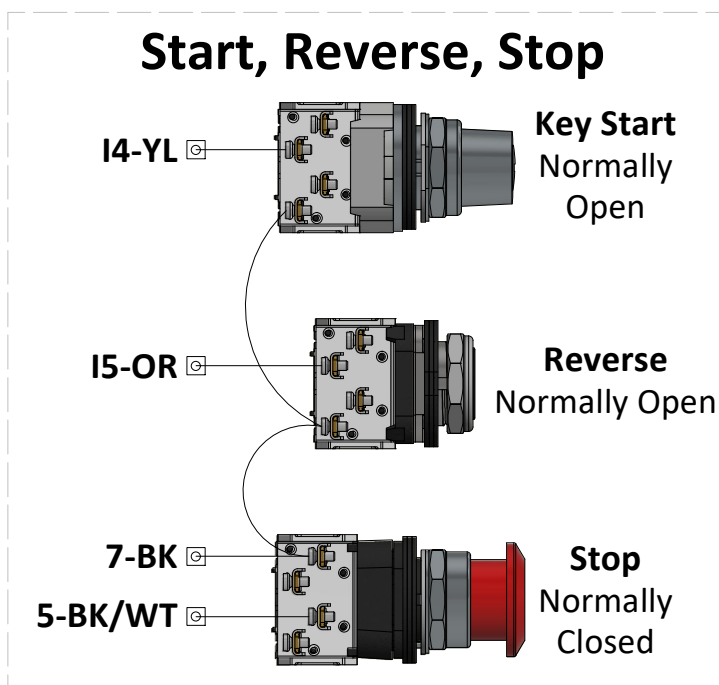
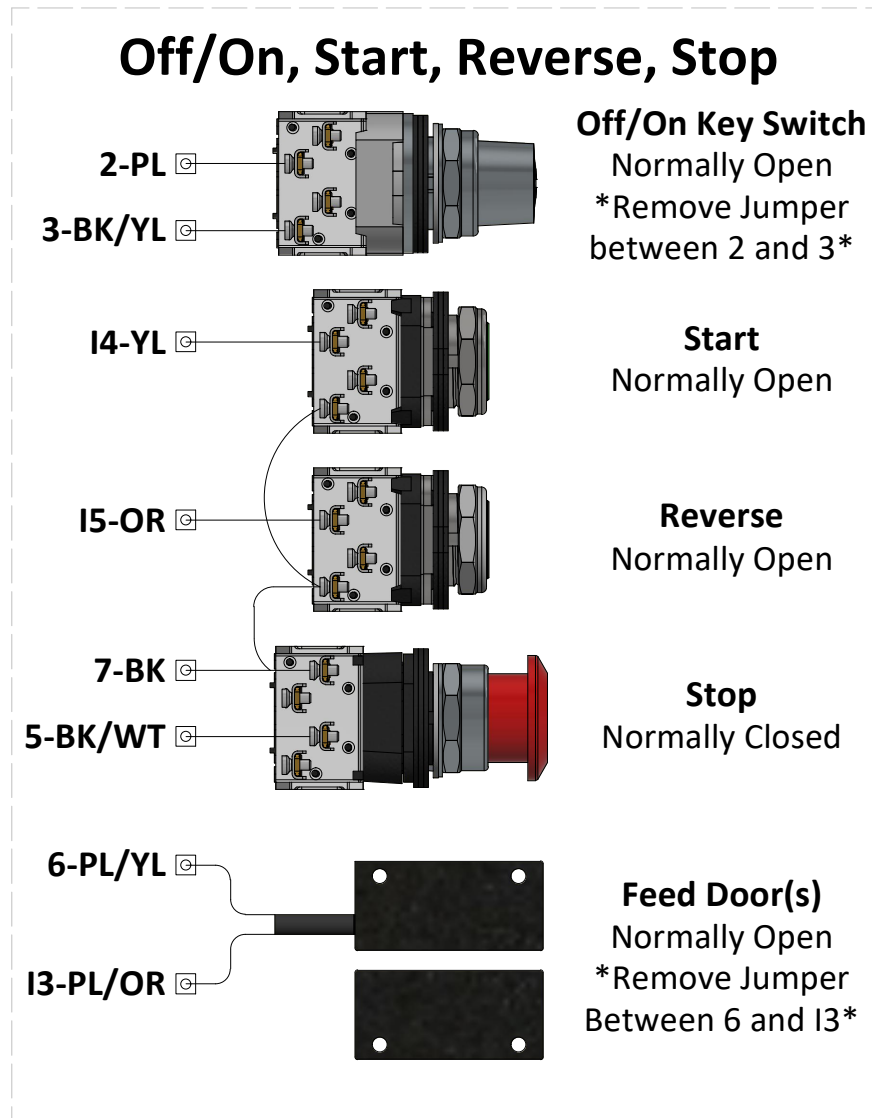
**\*DO NOT REMOVE 7 to Q1 1 JUMPER UNLESS YOU ARE USING AN INVERTER\***

Fig. D



# Typical Controls Wiring

Check schematic for more options.

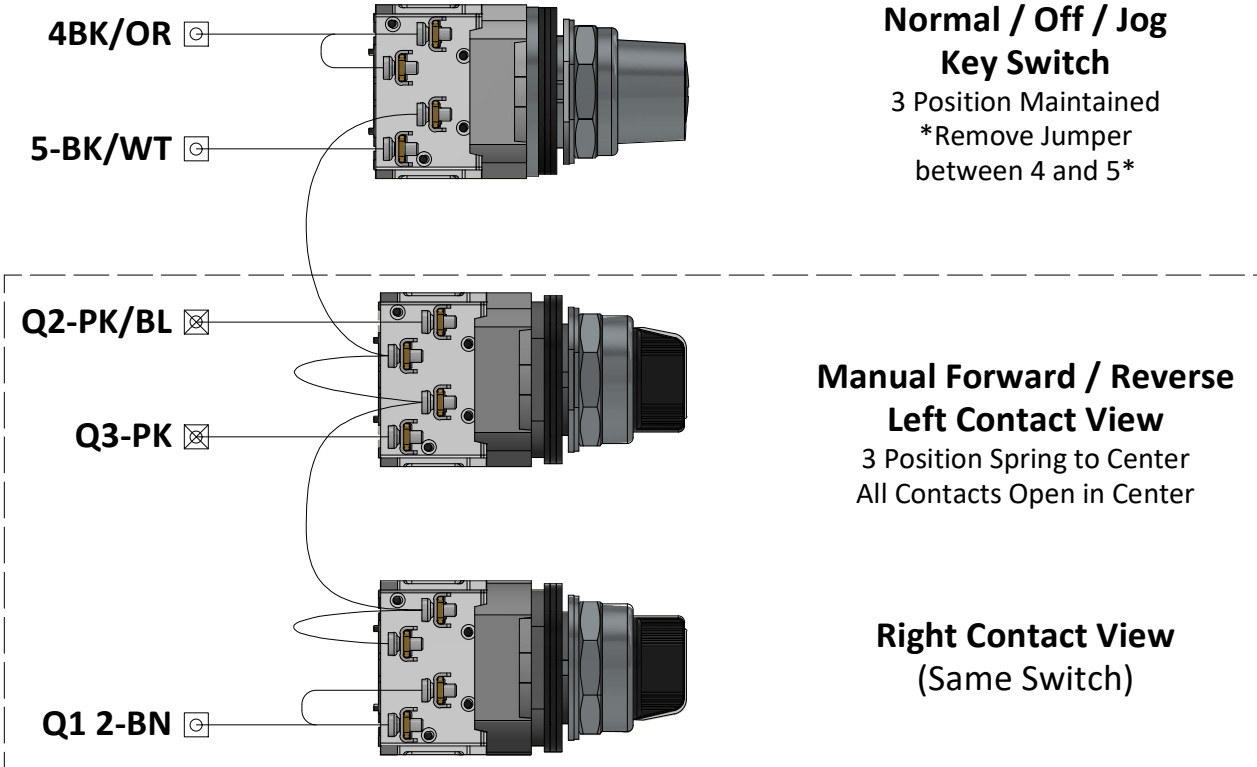


## Auto / Off / Jog, Manual Forward/ Reverse

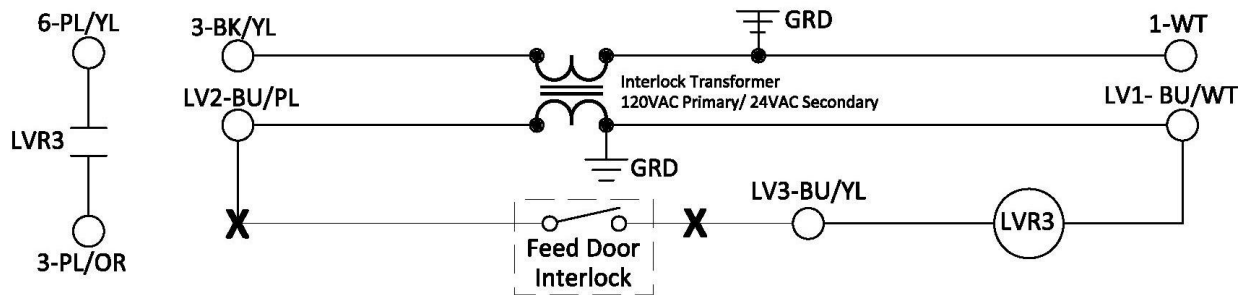
When switch is in Jog, all E-Stops/ Interlocks will be bypassed.

Forward and Reverse switch will Start motor and Jog ram.

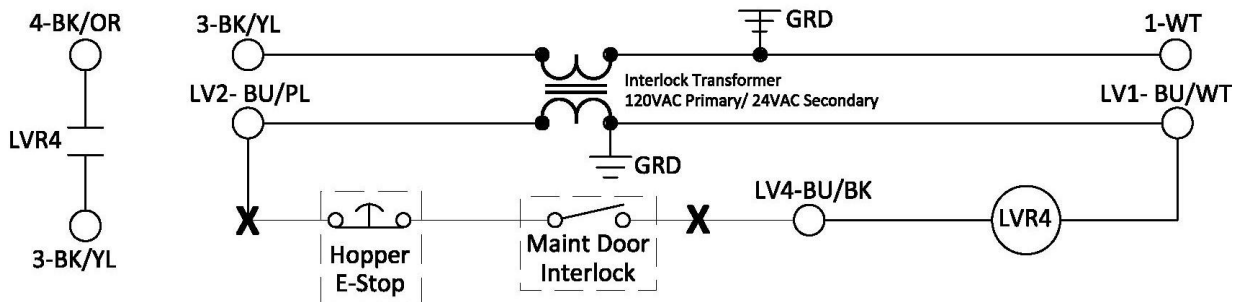
(\*NOT for Inverter\*)



### LOW VOLTAGE FEED DOOR INTERLOCK



### LOW VOLTAGE E-STOP OR MAINTENANCE DOOR



"X" indicates interlock plug. "LV\_" are additional low voltage terminal blocks.

Call PSI Waste if you need LV terminal blocks at no charge.

"LVR3" and "LVR4" are 24VAC relays(not provided).