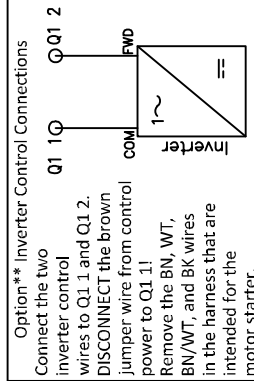
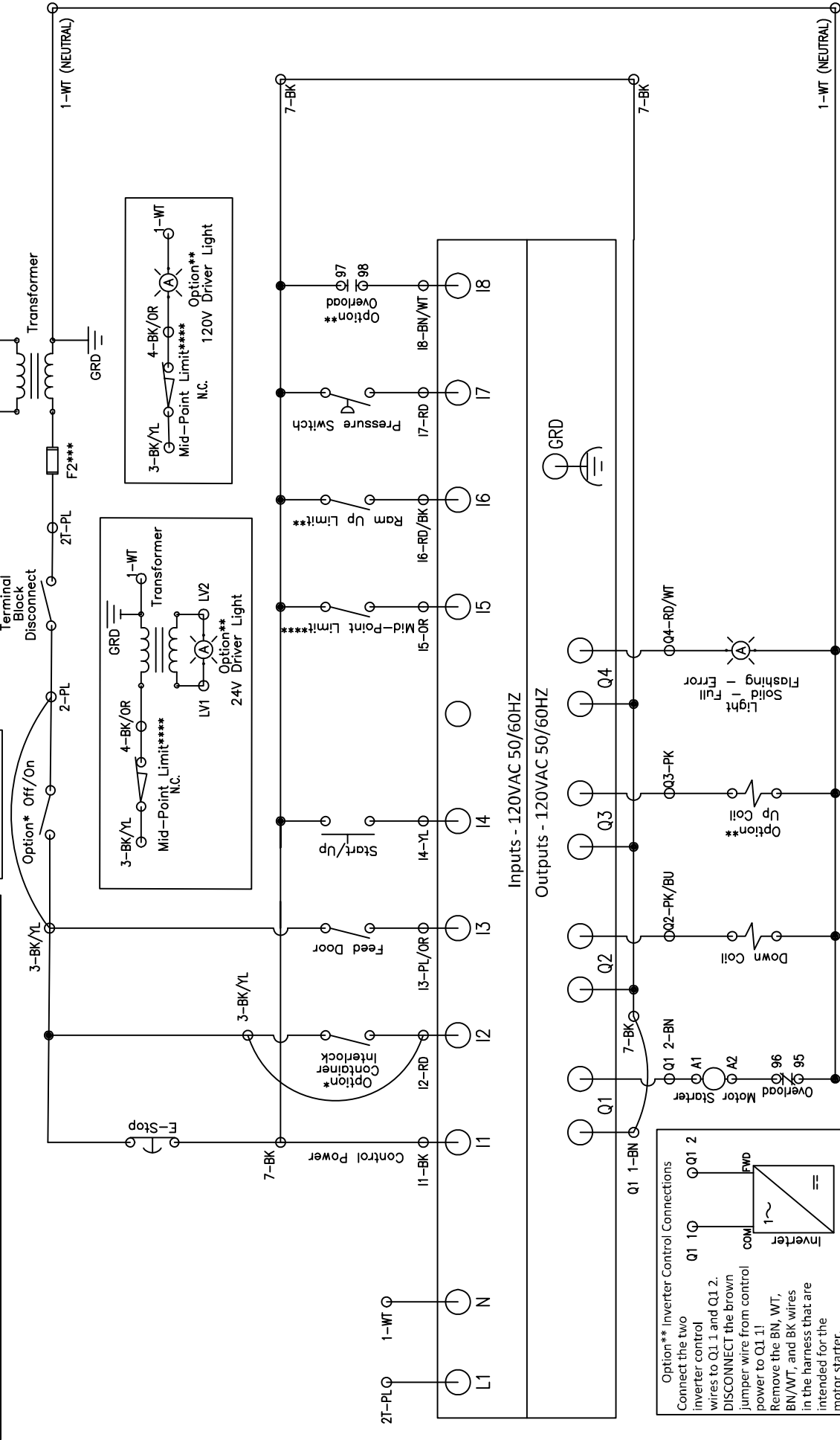
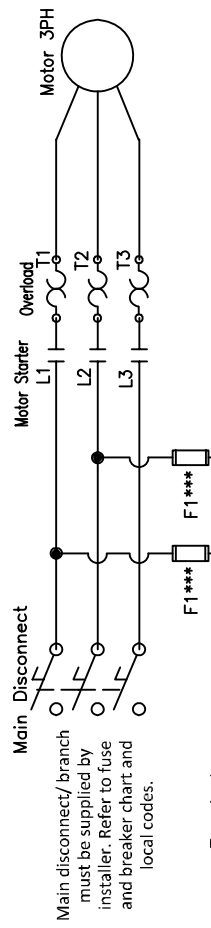
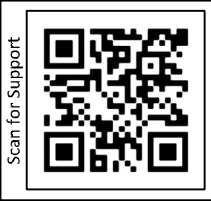


*	Indicates optional components. If option is installed, remove the corresponding jumper from the center jumper rail.
**	Indicates optional components. Omit connections if not installed.
***	CAUTION: To reduce the risk of fire, replace only with UL listed fuses of the same type and rating.
****	Indicates multiple options. See compatibility section of manual for settings of various options.
Field Wiring:	Use copper wire only



Panel Manufactured by PSI Waste Equipment Services, Inc. 31130 Industry Drive, A, Tavares, FL 32778 Support, downloads, and videos: www.versa-pak.net or call 352-742-4774 Opt 4

Title: **Versa-VIP v8, Standard**

DWG #: **VV801**

Date: **8/16/23**

Drawn: **CB**

Color Code:  
 GR - Green | WT - White | PL - Purple | BK - Black | BN - Brown  
 PK - Pink | BU - Blue | YL - Yellow | OR - Orange | RD - Red