

* Indicates optional components. If option is installed, remove the corresponding jumper from the center jumper rail.

** Indicates optional components. Omit connections if not installed.

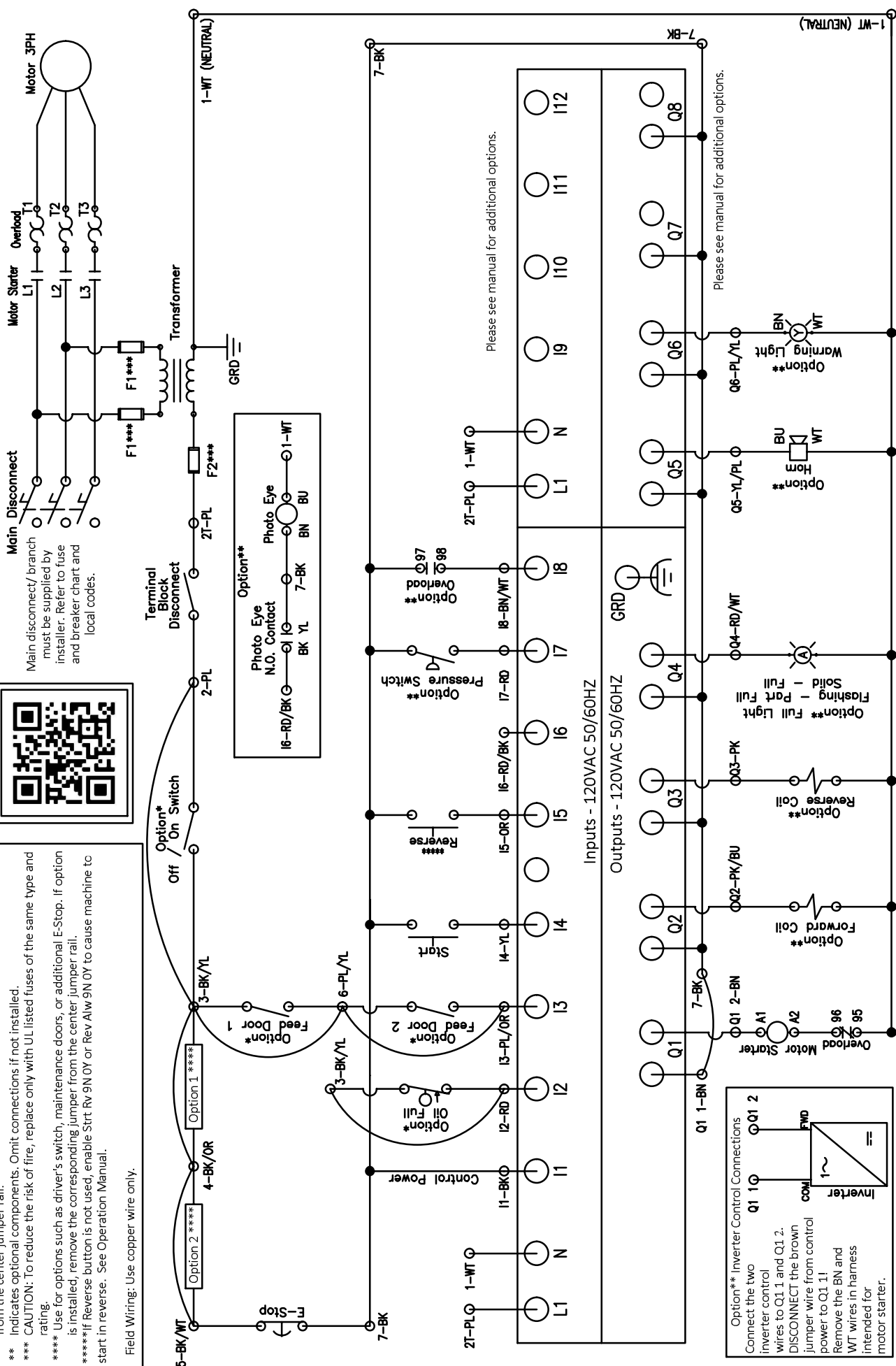
*** CAUTION: To reduce the risk of fire, replace only with UL listed fuses of the same type and rating.

**** Use for options such as driver's switch, maintenance doors, or additional E-Stop. If option is installed, remove the corresponding jumper from the center jumper rail.

***** If Reverse button is not used, enable Strt Rv 9N 0Y or Rev Alw 9N 0Y to cause machine to start in reverse. See Operation Manual.

Field Wiring: Use copper wire only.

Scan for Support



Color Code:

GR - Green | WT - White | PL - Purple | BK - Black | BN - Brown
PK - Pink | BU - Blue | YL - Yellow | OR - Orange | RD - Red

Title: Versa-Pak 8X, Standard

DWG #: VP8X01

Date: 11/8/22

Drawn: CB