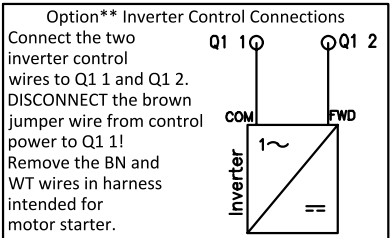
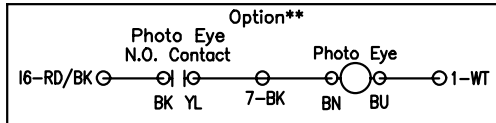
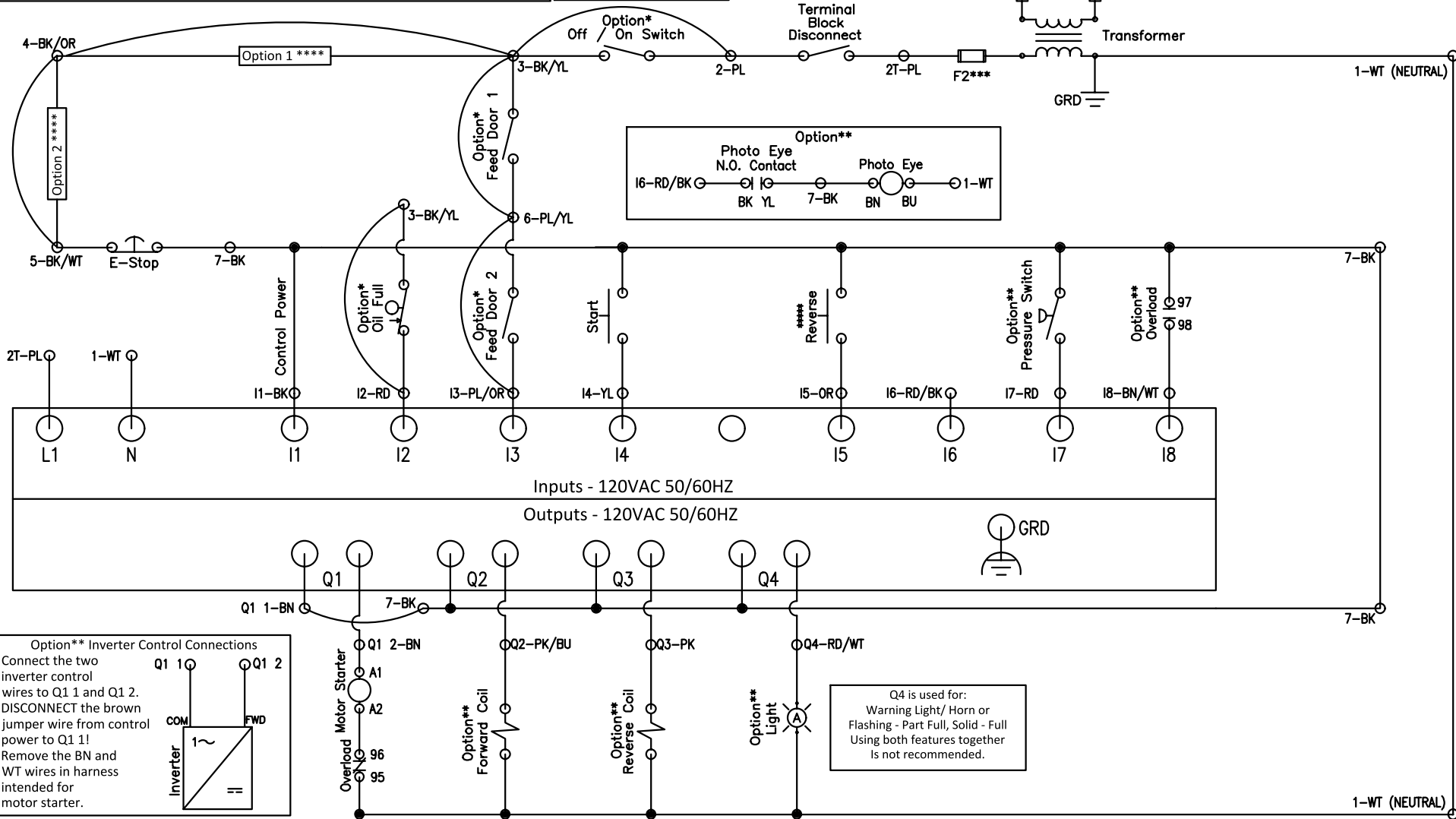
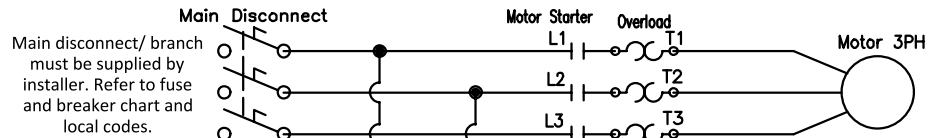


* Indicates optional components. If option is installed, remove the corresponding jumper from the center jumper rail.
 ** Indicates optional components. Omit connections if not installed.
 *** CAUTION: To reduce the risk of fire, replace only with UL listed fuses of the same type and rating.
 **** Use for options such as driver's switch, maintenance doors, or additional E-Stop. If option is installed, remove the corresponding jumper from the center jumper rail.
 ***** If Reverse button is not used, enable Strt Rv 9N 0Y or Rev Alw 9N 0Y to cause machine to start in reverse. See Operation Manual.
 Field Wiring: Use copper wire only.



Q4 is used for:
 Warning Light/ Horn or
 Flashing - Part Full, Solid - Full
 Using both features together
 is not recommended.



Color Code:
 GR - Green | WT - White | PL - Purple | BK - Black | BN - Brown
 PK - Pink | BU - Blue | YL - Yellow | OR - Orange | RD - Red

Title: **Versa-Pak v8, Standard**
 DWG #: **VP801**

Date: **11/9/22**
 Drawn: **CB**