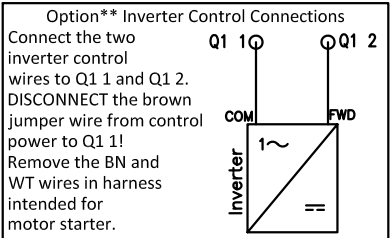
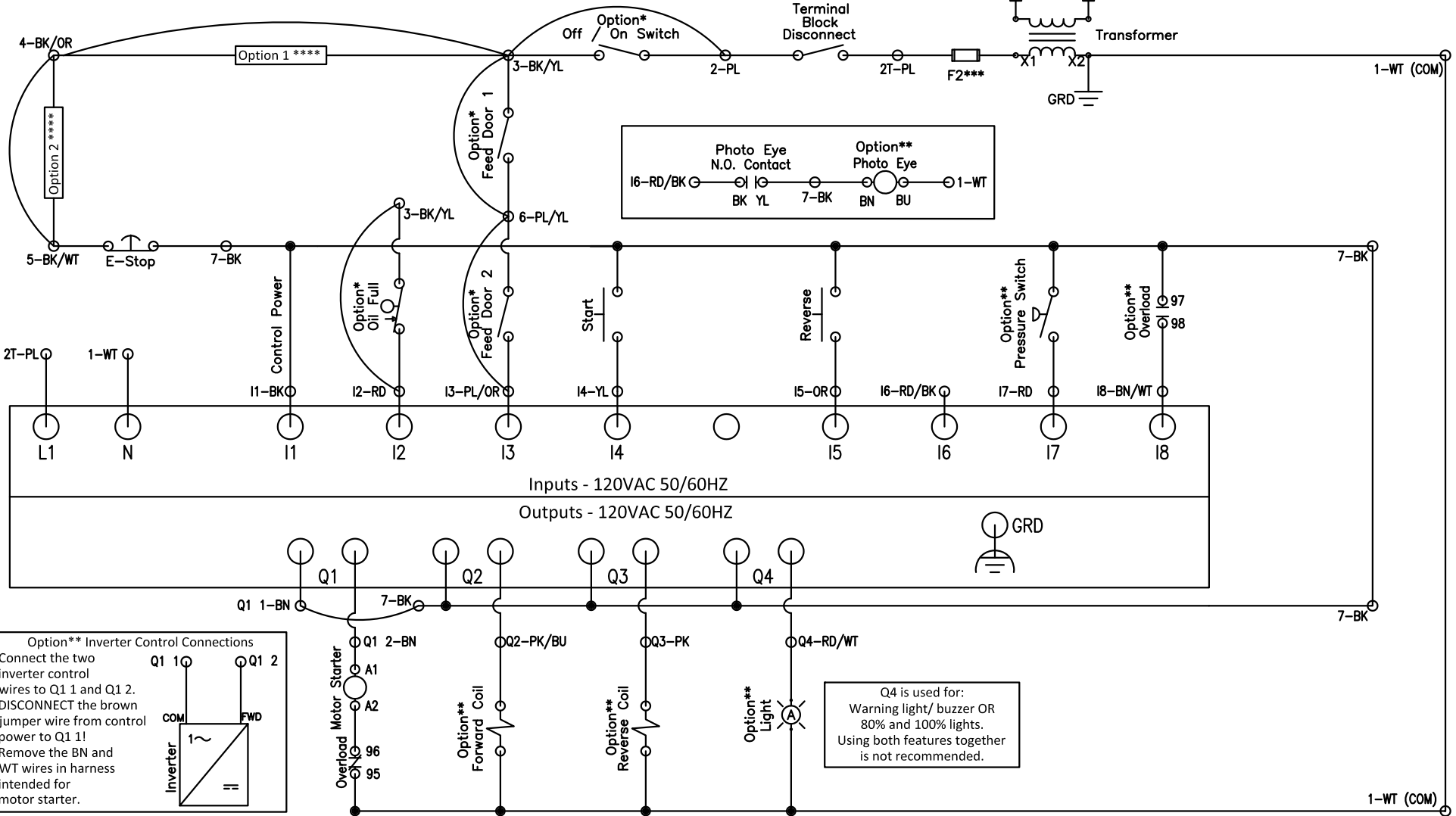
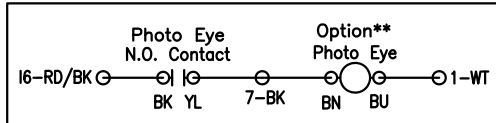
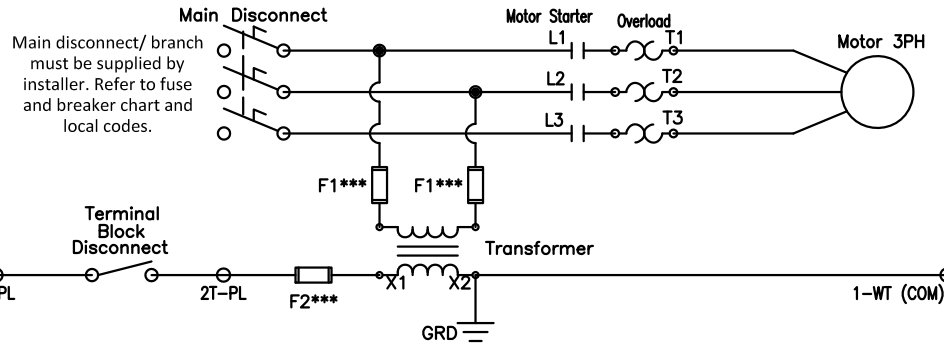


* Indicates optional components. If option is installed, remove the corresponding jumper from the center jumper rail.
 ** Indicates optional components. Omit connections if not installed.
 *** CAUTION: To reduce the risk of fire, replace only with UL listed fuses of the same type and rating.
 **** Use for options such as driver's switch, maintenance doors, or additional E-Stop. If option is installed, remove the corresponding jumper from the center jumper rail.

Field Wiring: Use copper wire only.

Scan for Support



Q4 is used for:
 Warning light/ buzzer OR
 80% and 100% lights.
 Using both features together is not recommended.



Color Code:
 GR - Green | WT - White | PL - Purple | BK - Black | BN - Brown
 PK - Pink | BU - Blue | YL - Yellow | OR - Orange | RD - Red

Title: **VP701**
 DWG #: **VP701**

Date: **8/31/21**
 Drawn: **CB**