

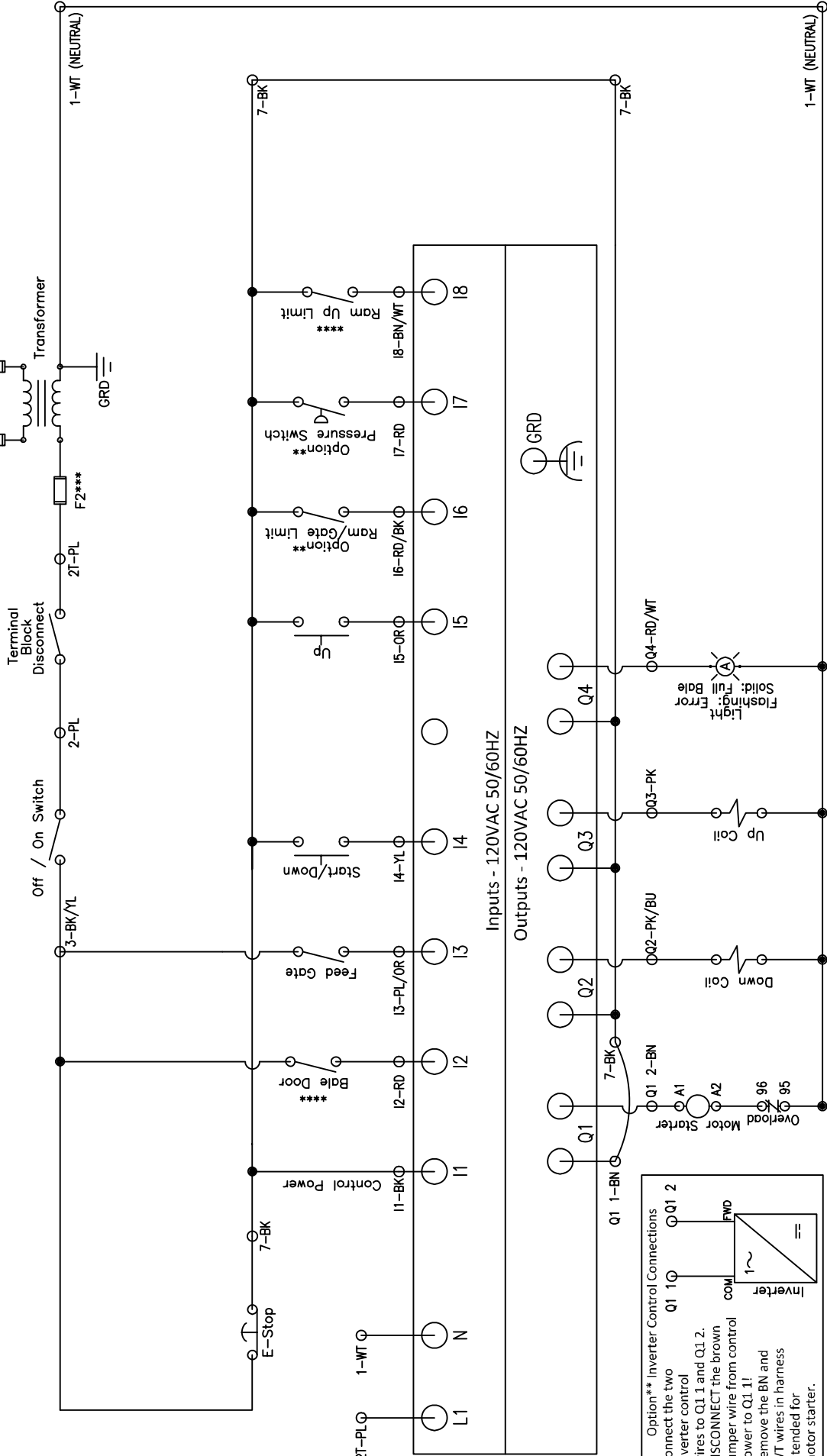
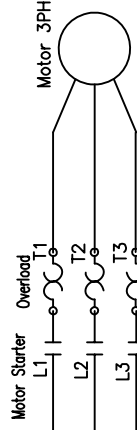
*** Indicates optional components. Omit connections if not installed.
 ***** CAUTION: To reduce the risk of fire, replace only with UL listed fuses of the same type and rating.
 ***** For Marathon Balers that have Feed Gate and Bale Door interlocks combined, wire interlock as Feed Gate. Omit Bale Door, Ram Up Limit and Ram/Gate Limit connections. Set Parameter [BaleDr 9Y-0N] to 00:00.

Field Wiring: Use copper wire only.



Scan for Support

Main Disconnect
 Main disconnect/branch must be supplied by installer. Refer to fuse and breaker chart and local codes.



Versa-Pak

Panel Manufactured by PSI Waste Equipment Services, Inc. 31130 Industry Drive, A, Tavares, FL 32778 Support, downloads, and videos: www.versa-bale.net or call 352-742-4774 Opt 4

Title: Versa-Bale v8

DWG #: VB801

Date: 4/13/23

Drawn: CB

Color Code:
 GR - Green | WT - White | PL - Purple | BK - Black | BN - Brown
 PK - Pink | BU - Blue | YL - Yellow | OR - Orange | RD - Red